

Encore FR Pro Color



Light Efficiency:

8 Lumen/Watt

Light Quality:

CRI: 97.9

Color Temperature:

4944 K

Output: 2969 lm

Peak: 127245 cd

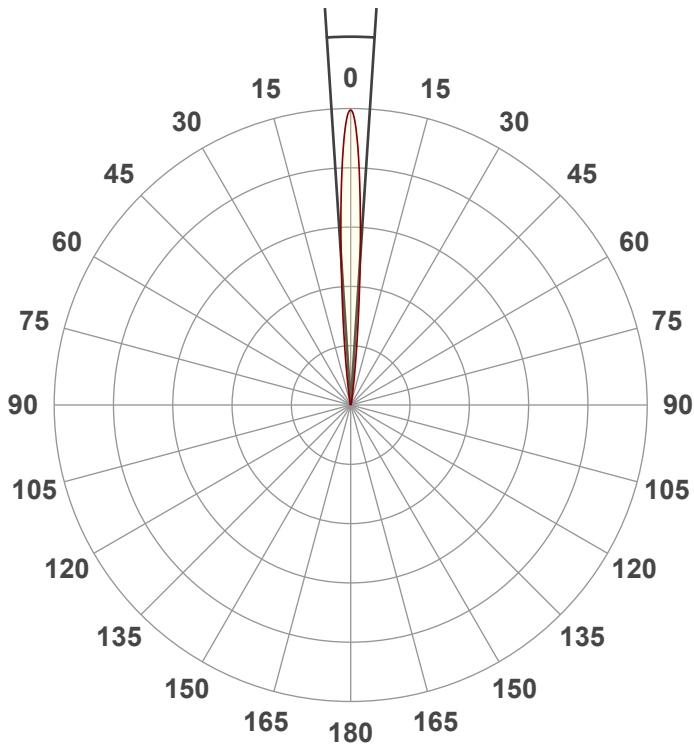
Power: 387 W

PF: 1.0



Beam Angle

7.4°



Test:

Zoom In CRI

Date:

11/15/2021

Note:

R @ 232

G @ 255

B @ 148

A @ 255

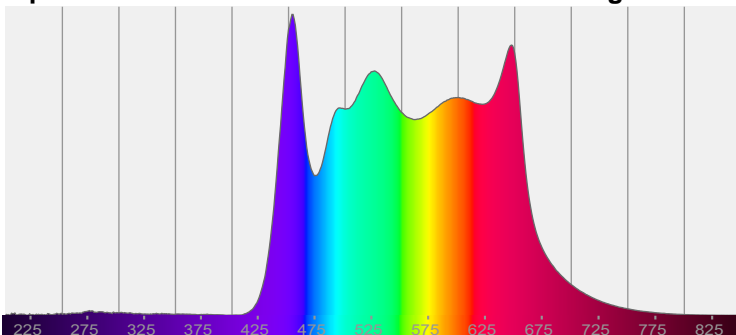
C @ 255

L @ 255

CIE 1931
x: 0.348
y: 0.366

Spectra

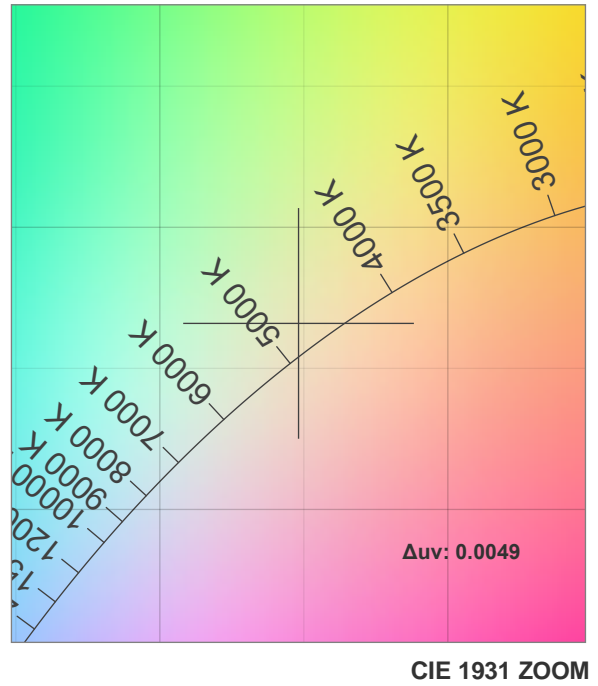
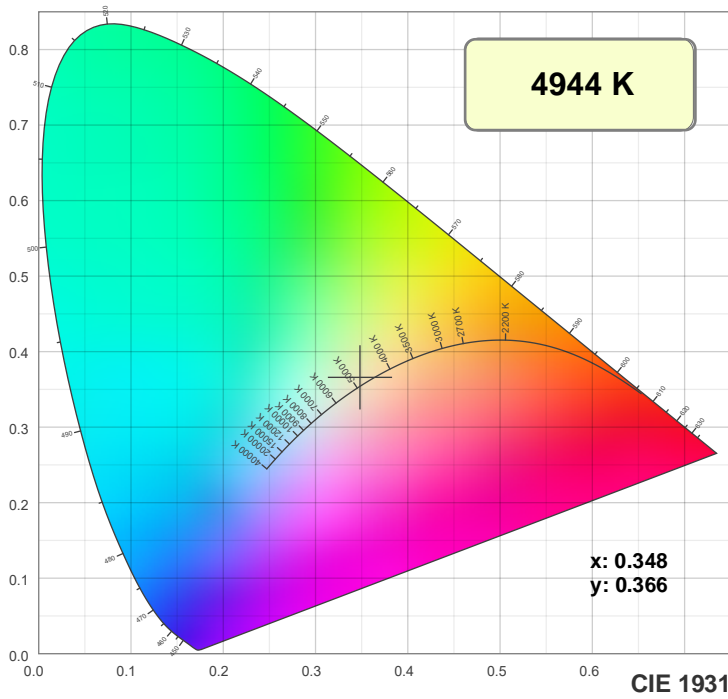
Dominant Wavelength: 576nm



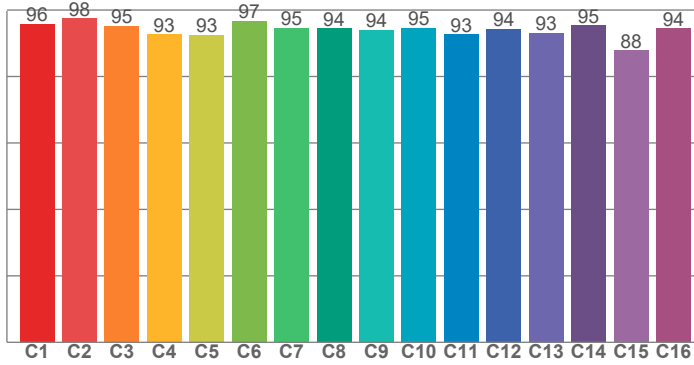
Power

Voltage: 115 V
Current: 3.38 A
Frequency: 0 Hz

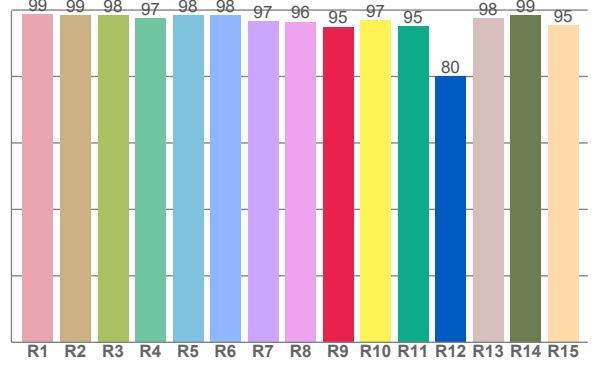
Color Details



TM30: 94.1



CRI: 97.9 (R1-R8)



CRI R values, only R1-R8 are used to calculate final CRI value

R1	R2	R3	R4	R5	R6	R7	R8	R9	R10	R11	R12	R13	R14	R15
98.8	98.5	98.5	97.5	98.4	98.4	96.5	96.4	94.9	97.0	95.2	79.9	97.5	98.5	95.4

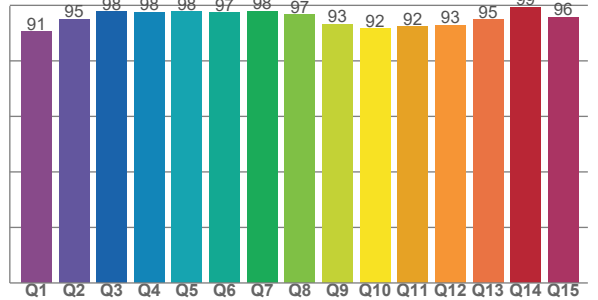
TM30 C values, 16 binned values out of total of 99 C values

C1	C2	C3	C4	C5	C6	C7	C8	C9	C10	C11	C12	C13	C14	C15	C16
95.9	97.5	95.3	92.6	92.6	96.7	94.7	94.4	94.0	94.6	92.7	94.4	93.1	95.3	87.9	94.5

CQS Q values

Q1	Q2	Q3	Q4	Q5	Q6	Q7	Q8	Q9	Q10	Q11	Q12	Q13	Q14	Q15
90.5	95.1	97.8	97.6	97.8	97.3	97.9	96.6	93.3	91.5	92.4	92.9	94.9	99.4	95.8

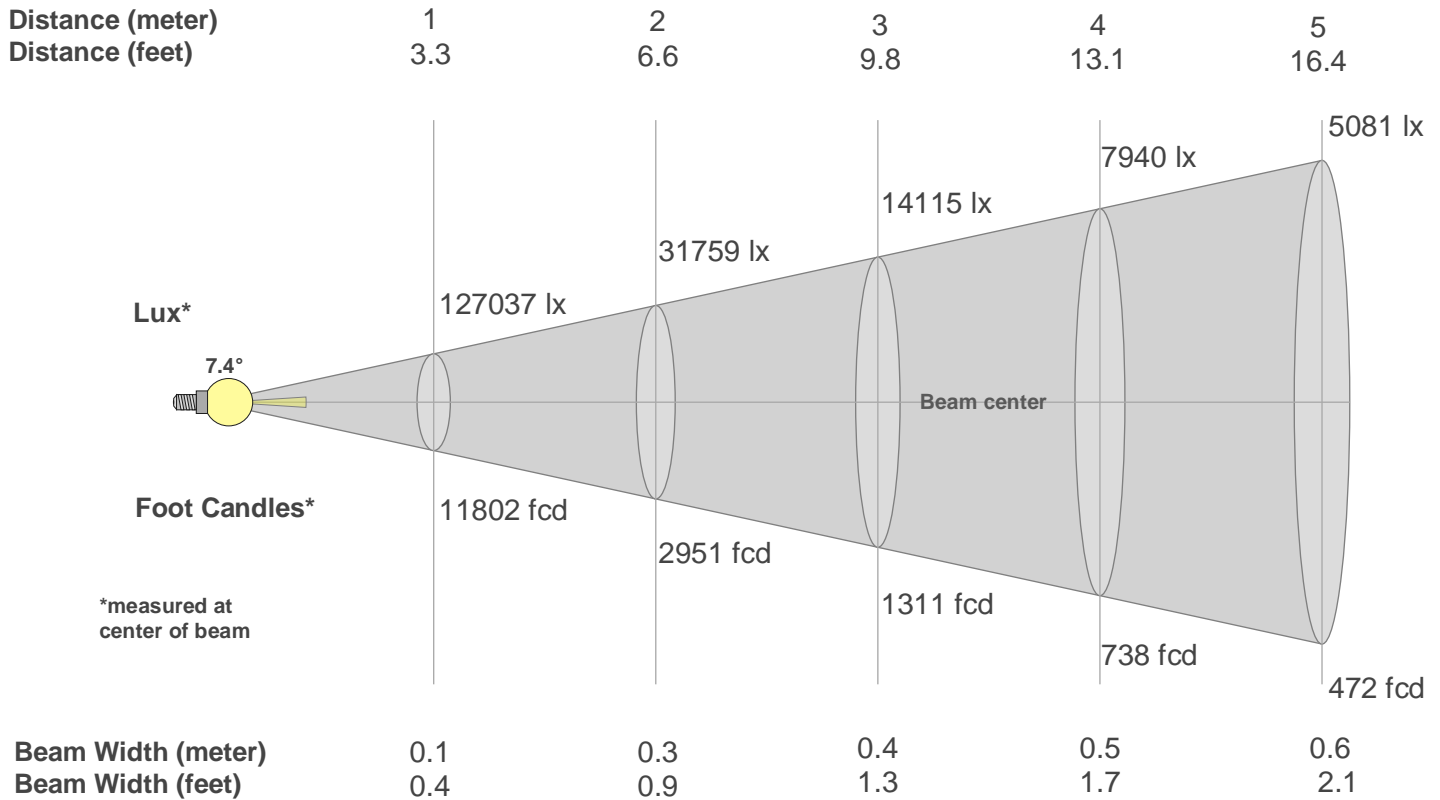
CQS: 94.7



Color Parameters

Color Temperature	Color Rendering Index	Red Component	Color Fidelity	Color Gamut	Color Quality Scale	Color Coordinate CIE 1931	Color Coordinate CIE 1931	Color Coordinate	Color Coordinate	Color Deviation from Black Body
CCT	CRI	CRI R9	TM30 Rf	TM30 Rg	CQS	x	y	u	v	Δuv
4944 K	97.9	94.9	94.1	99.6	94.7	0.348	0.366	0.208	0.328	0.0049

Beam Details



Beam Intensities from 1-20m

m	1	2	3	4	5	6	7	8	9	10	11	12	13	14	15	16	17	18	19	20
ft	3.3	6.6	9.8	13.1	16.4	19.7	23	26.2	29.5	32.8	36.1	39.4	42.7	45.9	49.2	52.5	55.8	59.1	62.3	65.6
lx	127037	31759	14115	7940	5081	3529	2593	1985	1568	1270	1050	882	752	648	565	496	440	392	352	318
fcd	11802.1	2950.5	1311.3	737.6	472.1	327.8	240.9	184.4	145.7	118	97.5	82	69.8	60.2	52.5	46.1	40.8	36.4	32.7	29.5

Intensities in 0° C-plane

0°	1°	2°	3°	4°	5°	6°	7°	8°	9°	10°	11°	12°	13°	14°	15°	16°	17°	18°	19°
127K	121K	104K	81K	57K	38K	24K	14K	9K	5K	4K	2K	2K	1K	1K	1K	1K	0K	0K	0K
100%	95%	82%	64%	45%	30%	19%	11%	7%	4%	3%	2%	1%	1%	1%	1%	0%	0%	0%	0%

Intensities in 90° C-plane

0°	1°	2°	3°	4°	5°	6°	7°	8°	9°	10°	11°	12°	13°	14°	15°	16°	17°	18°	19°
127K	121K	104K	81K	57K	38K	24K	14K	9K	5K	4K	2K	2K	1K	1K	1K	1K	0K	0K	0K
100%	95%	82%	64%	45%	30%	19%	11%	7%	4%	3%	2%	1%	1%	1%	1%	0%	0%	0%	0%

Intensities in 180° C-plane

0°	1°	2°	3°	4°	5°	6°	7°	8°	9°	10°	11°	12°	13°	14°	15°	16°	17°	18°	19°
127K	120K	103K	80K	57K	38K	24K	15K	9K	6K	4K	3K	2K	1K	1K	1K	1K	1K	1K	0K
100%	95%	81%	63%	45%	30%	19%	11%	7%	4%	3%	2%	2%	1%	1%	1%	1%	1%	0%	0%

Intensities in 270° C-plane

0°	1°	2°	3°	4°	5°	6°	7°	8°	9°	10°	11°	12°	13°	14°	15°	16°	17°	18°	19°
127K	120K	103K	80K	57K	38K	24K	15K	9K	6K	4K	3K	2K	1K	1K	1K	1K	1K	1K	0K
100%	95%	81%	63%	45%	30%	19%	11%	7%	4%	3%	2%	2%	1%	1%	1%	1%	1%	0%	0%

Beam Angle 50%	Field Angle 10%	Cutoff Angle 2,5%	Intensity Ratio in 120° Cone	Intensity Ratio in 90° Cone
7.4°	14.5°	20.7°	100.0%	100.0%